

Step 1: What You Will Need



1-1/4" in spade bit or forstner bit for drilling push plate
7/8" in auger or spade bit for drilling SoftSlam hole

You will also need Adhesive



You can use a curved circlip pliers, a long nose pliers, a circlip pliers or a curved long nose pliers



Step 2: Get to know your door

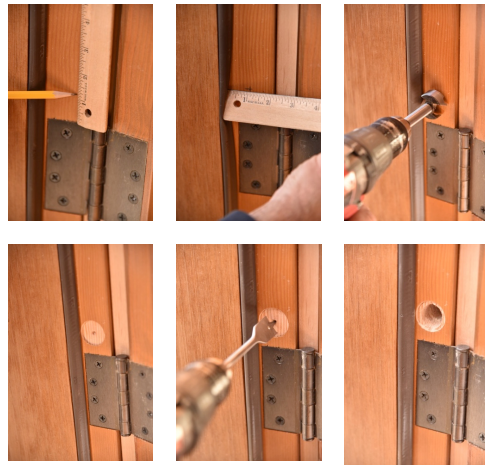
1. Decide if you want your SoftSlam in the jamb or in the door. If you have a door frame that cannot be drilled into then you must drill into the door itself.
2. Analyze your door gap – If your door has a standard 1/8" or wider gap, you are ready to go. If not, using your 1-1/4" inch spade bit carefully create a place to countersink the SoftSlam flange/plate of 1/8" inch thickness. This is also a cleaner look.

Note: If the gap is not large enough and this step is skipped, your door can bind on closing

Always make sure and be careful to not drill into possible electrical and water lines.

Step 3: Drilling the 7/8" inch hole

1. Mark the center point of the door jamb 1-1/8" inch above the bottom hinge where you want your SoftSlam. Don't forget to mark the center point horizontally removing weather seal temporarily if on an exterior door.
If your door has a narrow gap, use your 1-1/4" spade bit and carefully drill to recess the SoftSlam
2. Using your 7/8" inch bit, drill at least 4-1/4" inches deep at the center point. Insert the SoftSlam into the hole to verify fit. If it is too tight, use your drill to ease it slightly. Make sure to drill straight and steady!

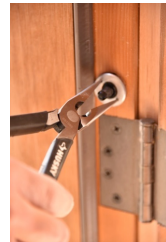


Step 4: Screw the SoftSlam in firmly

Use your needle nose or circlip pliers to screw the SoftSlam in firmly till the flange is seated for the gap required.

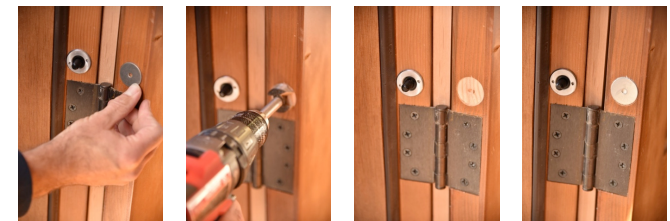
Take your time.

You can also use a touch of soap or candle to make it easier just like you do with a screw if it is too tight. Or you can ease the hole a little more with the drill bit.



Step 5: Install the strike plate

1. Gently close your door. When you open the door again, there will be an indent from the SoftSlam on the opposite surface. This is the center point of the strike plate. This gives you an idea where the strike plate will be. Centre the Strike plate to the door or jamb.
2. For a clean finish, you will want the strike plate to sit flush with the surface. Using the 1 1/4" inch bit, carefully create a counter sink to set the strike plate in.
3. Apply adhesive to the back side of the strike plate.
4. Insert strike plate into the recessed area. Don't forget to clean off excess adhesive!
5. Close door and leave undisturbed until glue sets per the glue manufacturer's recommendations. Any Construction adhesive for metal and wood will do.



You are now ready to use your SoftSlam

Remember, your SoftSlam has a reset time after every activation. Do not catch a finger in the door while playing with your anti-slamming device. Watch for the RESET. Heavy duty has a longer reset than light duty. If your hinge is pulling away from the door jamb you will need longer screws installed on hinge. Contact SoftSlam USA if you think that your SoftSlam is not working. Send a video or return your SoftSlam, in good condition, for a full refund.

If you have any questions or concerns on installing please call us or contact your local door installer/carpenter. (After you install the first one they get easier to install in 15 minutes or less)